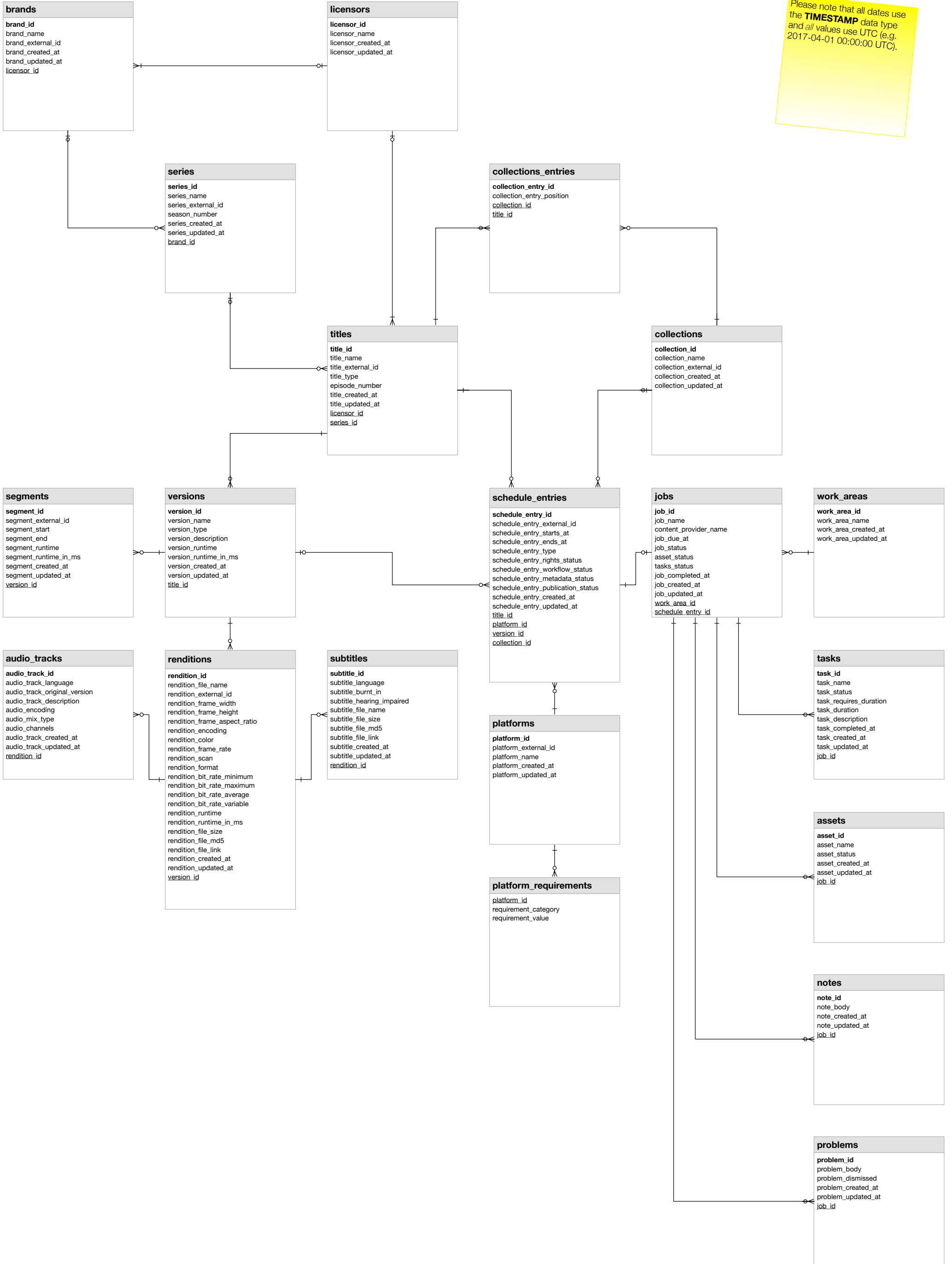


Reporter Entity Relationship Diagram: Catalog, Schedules, and Workflow

Version 1.17.1 / 2018-04-12 (revision A)

Please note that all dates use the **TIMESTAMP** data type and *all* values use UTC (e.g. 2017-04-01 00:00:00 UTC).



Reporter Entity Relationship Diagram: Rights

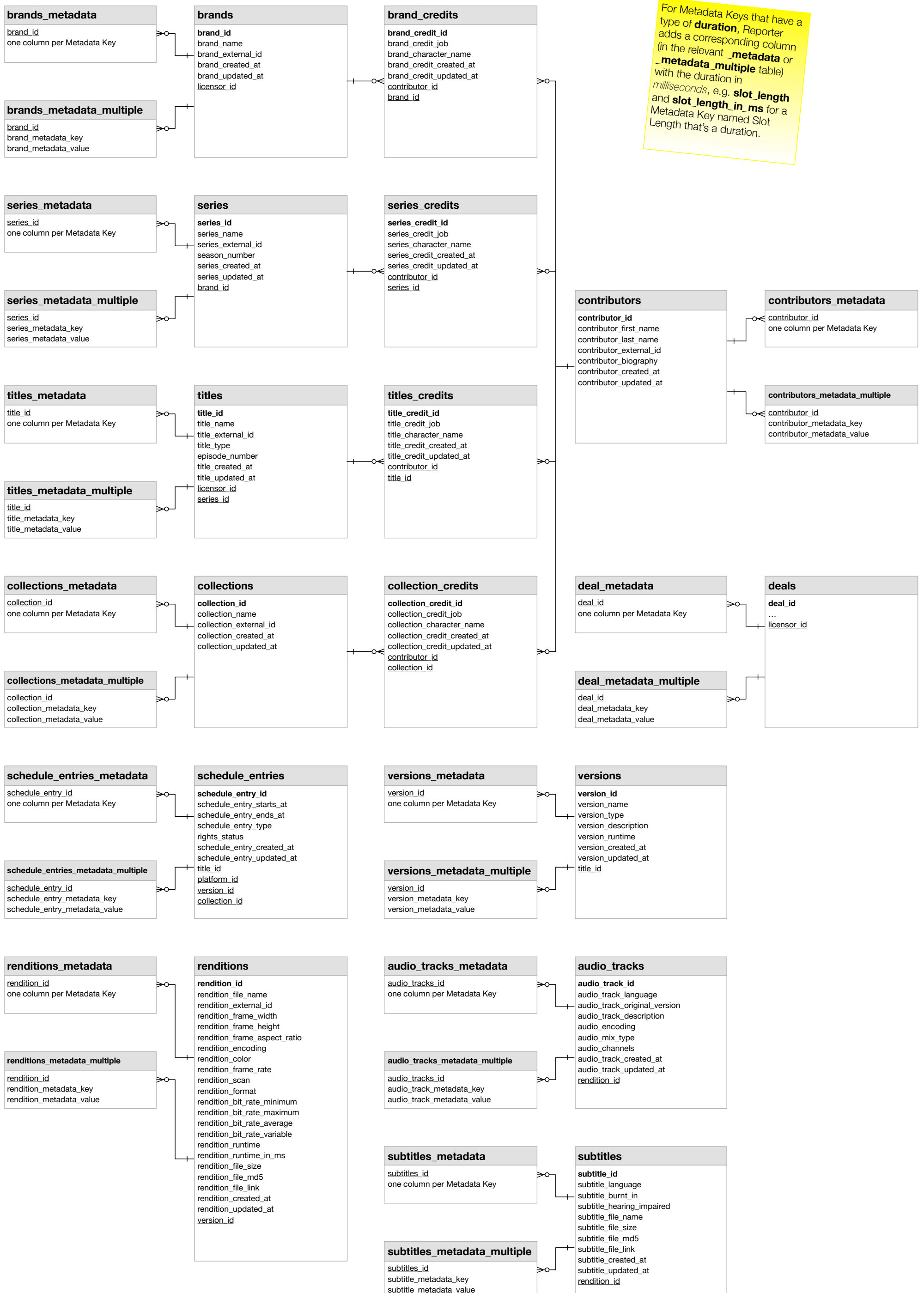
Version 1.17.1 / 2018-04-12 (revision A)



Please note that all dates use the **TIMESTAMP** data type and *all* values use UTC (e.g. 2017-04-01 00:00:00 UTC).

Reporter Entity Relationship Diagram: Metadata

Version 1.17.1 / 2018-04-12 (revision A)



For Metadata Keys that have a type of **duration**, Reporter adds a corresponding column (in the relevant **_metadata** or **_metadata_multiple** table) with the duration in *milliseconds*, e.g. **slot_length** and **slot_length_in_ms** for a Metadata Key named Slot Length that's a duration.